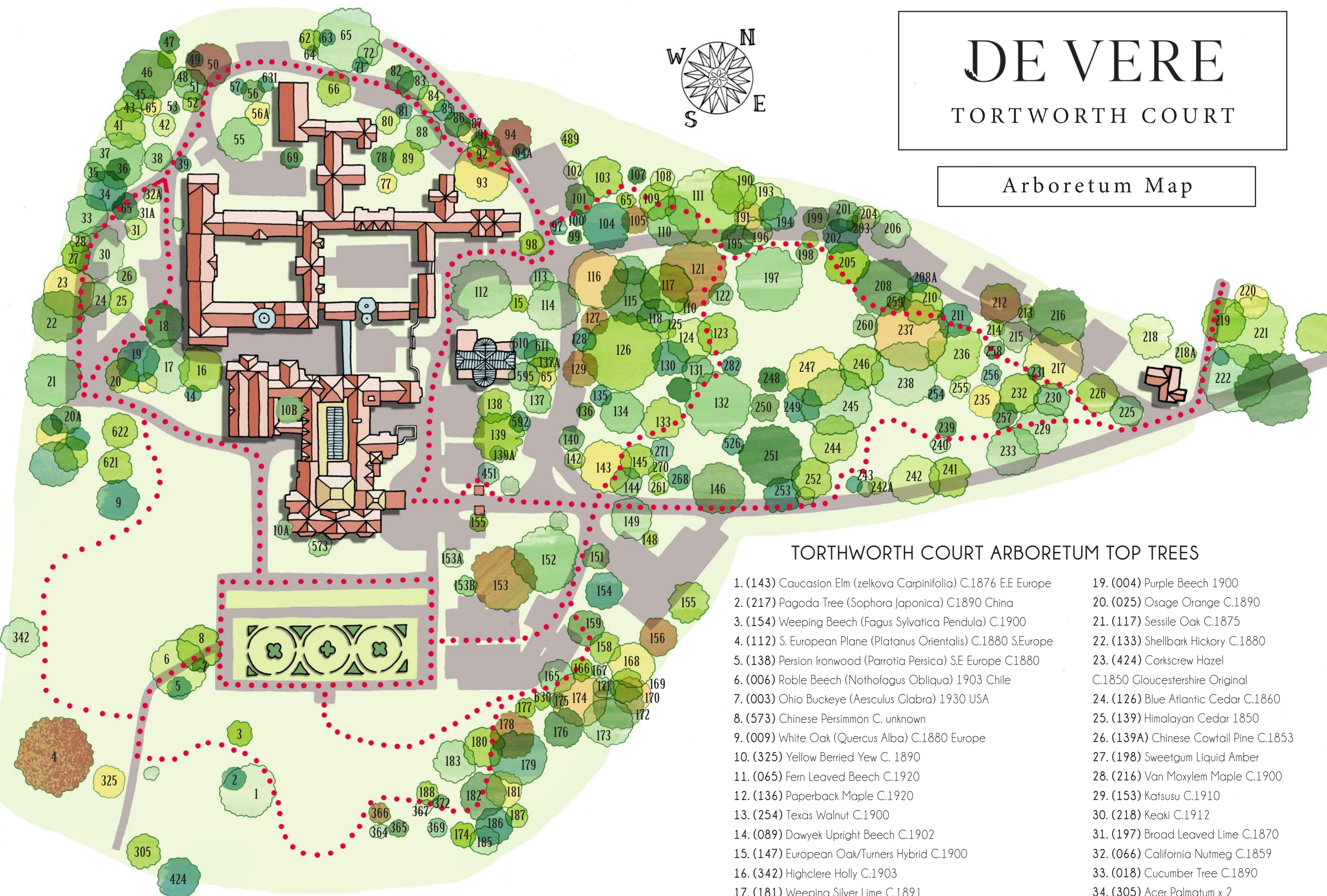
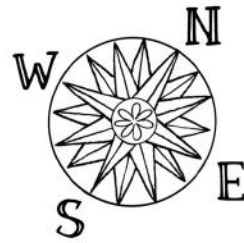


DE VERE

TORTWORTH COURT

Arboretum Map



TORTWORTH COURT ARBORETUM TOP TREES

- | | |
|---|---|
| 1. (143) Caucasian Elm (<i>Ulmus glaberrimus</i>) C.1876 E.E Europe | 19. (004) Purple Beech 1900 |
| 2. (217) Pagoda Tree (<i>Sophora japonica</i>) C.1890 China | 20. (025) Osage Orange C.1890 |
| 3. (154) Weeping Beech (<i>Fagus sylvatica pendula</i>) C.1900 | 21. (117) Sessile Oak C.1875 |
| 4. (112) S. European Plane (<i>Platanus orientalis</i>) C.1880 S.Europe | 22. (133) Shellbark Hickory C.1880 |
| 5. (138) Persian Ironwood (<i>Parrotia persica</i>) S.E Europe C.1880 | 23. (424) Corkscrew Hazel C.1850 Gloucestershire Original |
| 6. (006) Roble Beech (<i>Nothofagus obliqua</i>) 1903 Chile | 24. (126) Blue Atlantic Cedar C.1860 |
| 7. (003) Ohio Buckeye (<i>Aesculus glabra</i>) 1930 USA | 25. (139) Himalayan Cedar 1850 |
| 8. (573) Chinese Persimmon C. unknown | 26. (139A) Chinese Cowtail Pine C.1853 |
| 9. (009) White Oak (<i>Quercus alba</i>) C.1880 Europe | 27. (198) Sweetgum Liquid Amber |
| 10. (325) Yellow Berried Yew C. 1890 | 28. (216) Van Moxylem Maple C.1900 |
| 11. (065) Fern Leaved Beech C.1920 | 29. (153) Katsusu C.1910 |
| 12. (136) Paperback Maple C.1920 | 30. (218) Keaki C.1912 |
| 13. (254) Texas Walnut C.1900 | 31. (197) Broad Leaved Lime C.1870 |
| 14. (089) Dawyek Upright Beech C.1902 | 32. (066) California Nutmeg C.1859 |
| 15. (147) European Oak/Turners Hybrid C.1900 | 33. (018) Cucumber Tree C.1890 |
| 16. (342) Highclere Holly C.1903 | 34. (305) Acer Palmatum x 2 |
| 17. (181) Weeping Silver Lime C.1891 | 35. (116) Persian Ironwood |